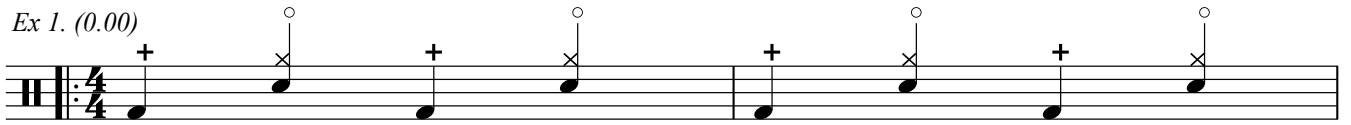
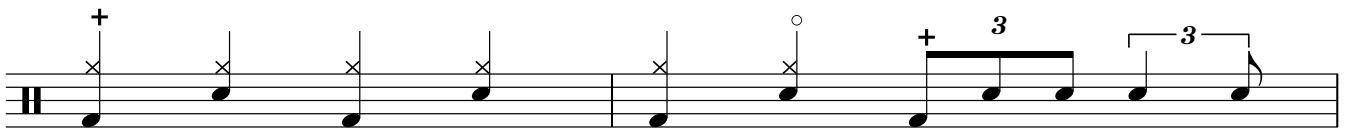
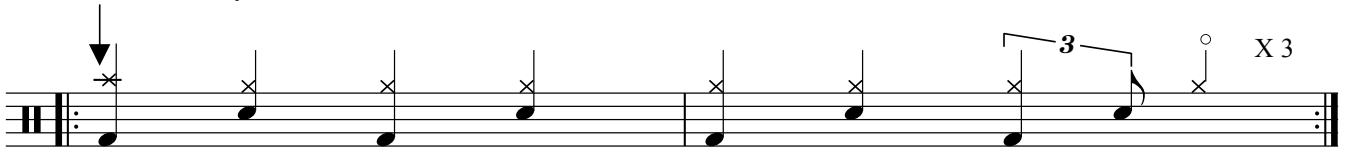


Queens of the Stone Age - No One Knows

Ex 1. (0.00)

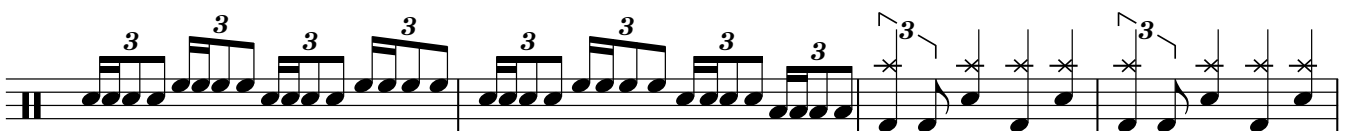
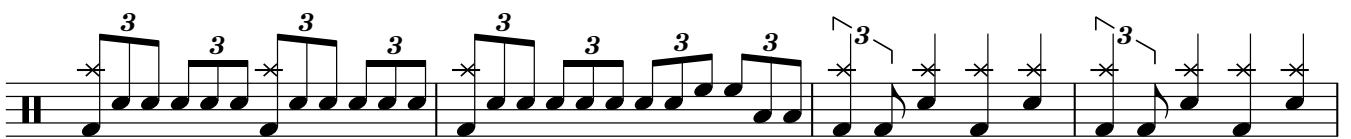


Crash first time only



Ex 2. (1.10)

Video Starts Here



Ex 3. (2.52)

Exercise 3 consists of four staves of music. The first three staves feature rhythmic patterns with triplets and accents. The first staff begins with a triplet of eighth notes, followed by a triplet of quarter notes, and continues with various triplet patterns. The second and third staves continue these patterns, including a triplet of eighth notes with an accent. The fourth staff contains a sequence of triplets, including a triplet of eighth notes with an accent, and ends with a triplet of eighth notes.

A blank musical staff with a double bar line at the beginning and end.

Ex 4.

Exercise 4 consists of four staves of music. The first staff begins with a triplet of eighth notes with an accent, followed by a triplet of quarter notes. The second and third staves feature continuous triplet patterns with accents, including a triplet of eighth notes with an accent. The fourth staff features a sequence of triplets with accents, including a triplet of eighth notes with an accent.